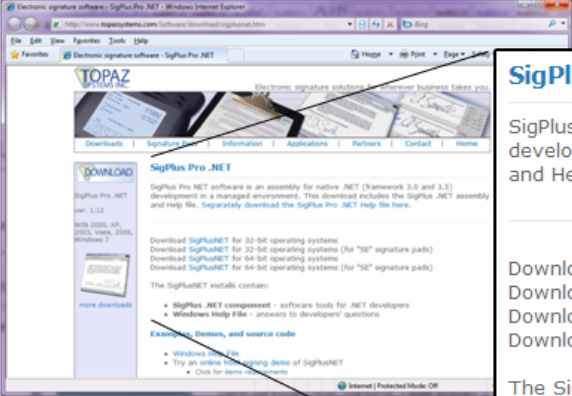


Set Up Topaz Signature Capture Device For Use With Infinity

The Topaz set-up msi can be downloaded using the following link. *Be sure to choose the one for "SE" signature pads.*

<http://www.topazsystems.com/Software/download/sigplusnet.htm>



SigPlus Pro .NET

SigPlus Pro NET software is an assembly for native .NET (framework 3.0 and 3.5) development in a managed environment. This download includes the SigPlus .NET assembly and Help file. [Separately download the SigPlus Pro .NET Help file here.](#)

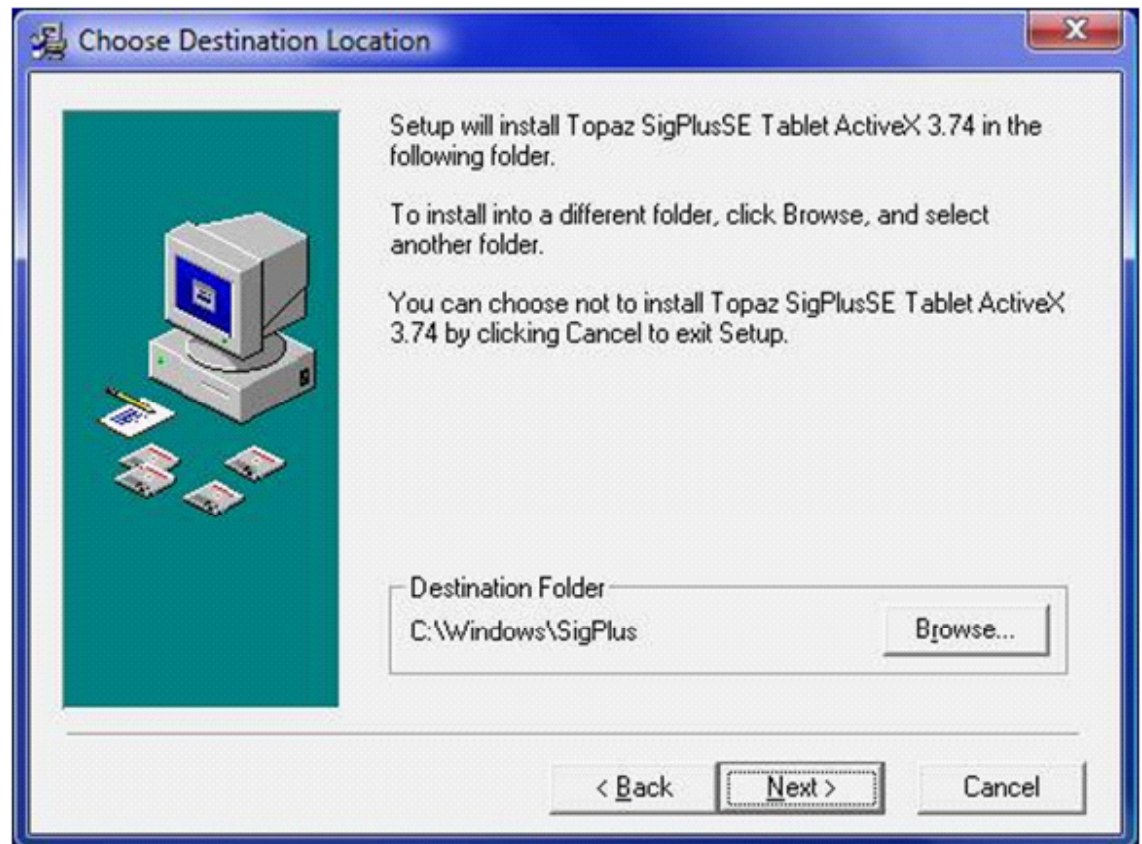
Download [SigPlusNET](#) for 32-bit operating systems
Download [SigPlusNET](#) for 32-bit operating systems (for "SE" signature pads)
Download [SigPlusNET](#) for 64-bit operating systems
Download [SigPlusNET](#) for 64-bit operating systems (for "SE" signature pads)

The SigPlusNET installs contain:

- **SigPlus .NET component** - software tools for .NET developers
- **Windows Help File** - answers to developers' questions

Installation is simple. Make sure the device is not plugged in. You will be reminded to plug in device after successfully installing software.

1. Use the default folder location and click "Next."

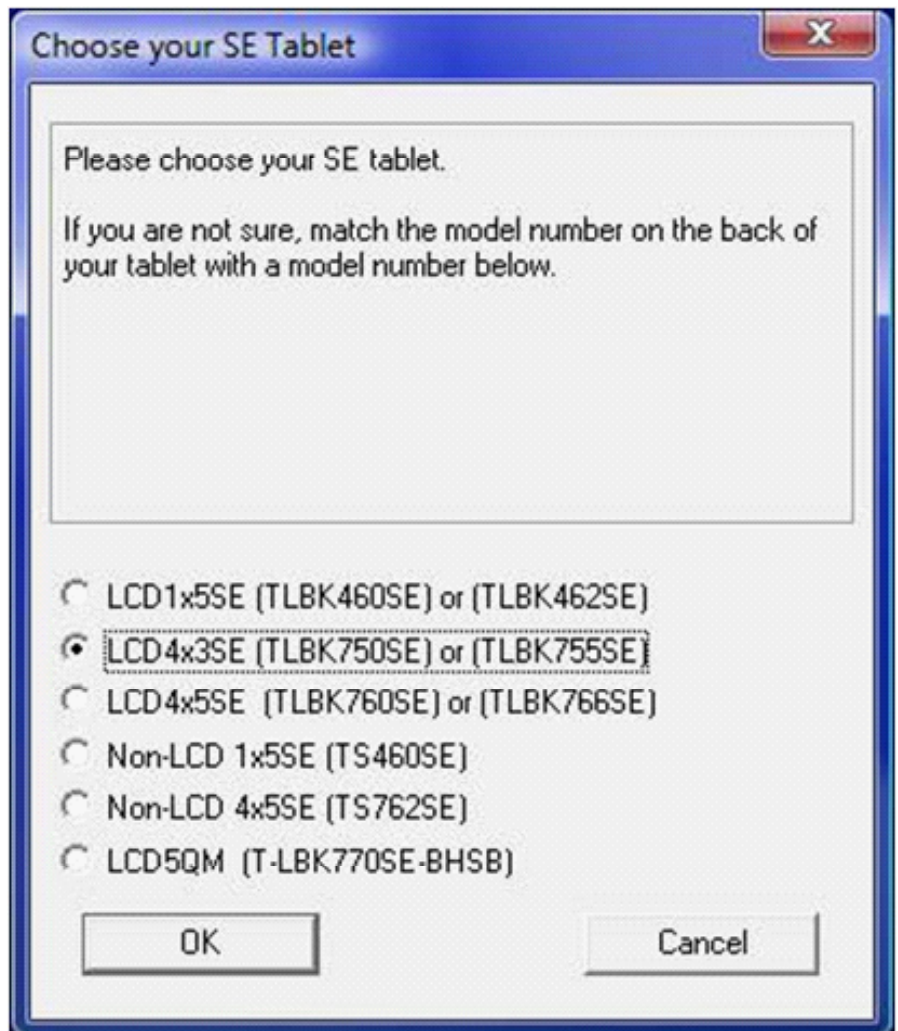


2. Choose your operating system and click "OK." For those using Vista, select the Windows 98\ME\2000\XP\2003 option.

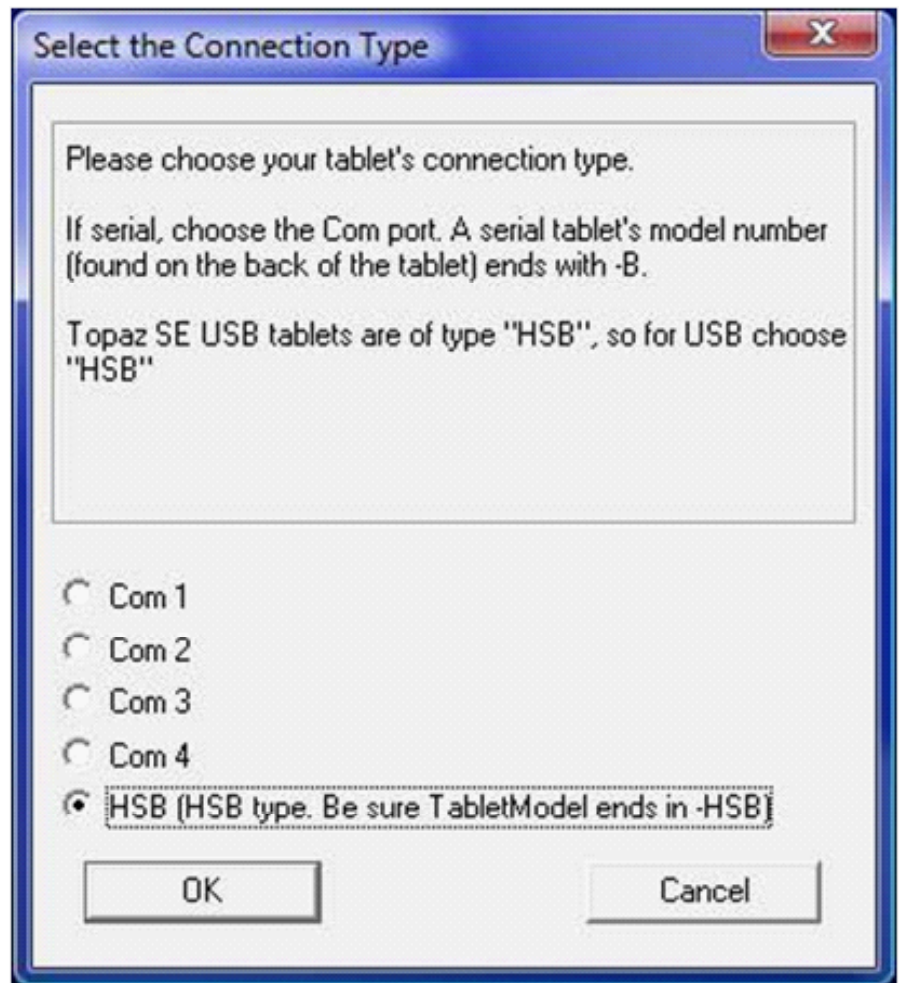


3. Chose SigGem "LCD 4X3E" and click "OK."

For a 64-bit installation, you might the NOT see the model number in the supported list. If so, choose the LCD 4X3SE (TLBK770SE) or (TLBK772SE) option, ignoring the Model Number.



4. Choose "HSB" for connection type and click "OK."



5. After installation, a restart is required. Press "OK."

